

SAN JOSÉ STATE UNIVERSITY

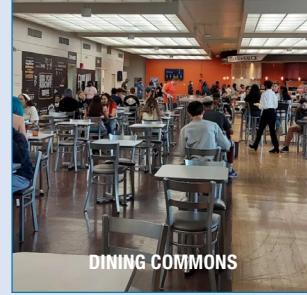
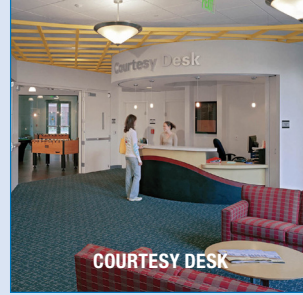
UNIVERSITY HOUSING SERVICES

2025-2026



SJSU | UNIVERSITY HOUSING
SERVICES

sjsu.edu/housing | uhs-frontdesk@sjsu.edu | 408-795-5600



PUTTING YOU AT THE CENTER OF THE SJSU EXPERIENCE!

A RESIDENTIAL LEARNING COMMUNITY

Living on campus is a critical part of the San José State student experience. Through intentional learning opportunities and community involvement, residents will be able to engage as contributing and empowered individuals who foster thriving communities. Our goal is to help residents develop self-awareness, relationships, cultural competency and ethical leadership through a wide variety of initiatives such as one-on-one conversations, roommate agreements, workshops and more.

We offer residence halls and apartments located on and near the main campus, close to classroom buildings, the Dr. Martin Luther King, Jr. Library, recreation and dining facilities, and downtown San José. Professional and student staff members live within the residential community, providing residents with support and programming. Staff members are trained to handle a variety of situations, including roommate conflicts, policy violations and crisis situations.

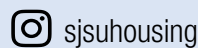
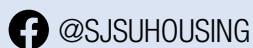
Housing programs and services are designed to cultivate students' academic and personal growth by supporting their transition to the university, acting as an extension of their classroom experience and increasing their awareness of community responsibility. Through intentional strategies, residential students have the opportunity to build one-on-one relationships and get involved in social events, cultural activities, intramural sports, community service and many other campus activities.

WEEKS OF WELCOME

During the first weeks of the fall semester, there are many social events to help students get connected and build friendships, in addition to educational programs designed to support students as they develop their independence, and academic workshops to assist students in preparing for their classes.

We look forward to hosting you here at SJSU!

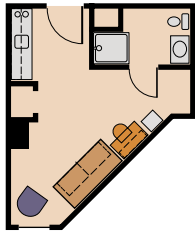
VISIT [SJSU.EDU/HOUSING](https://www.sjsu.edu/housing) FOR HOURS OF OPERATION



Residence Halls

CAMPUS VILLAGE BUILDING B (CVB)

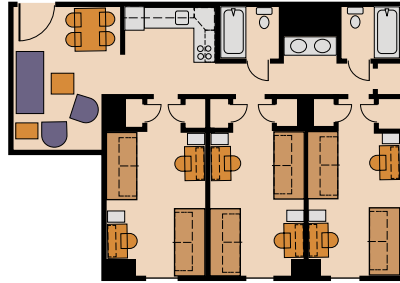
Campus Village Building B is an apartment building designed to accommodate over 1,550 sophomores, upper-division and graduate students who seek a more private, independent living environment. Stretching to 15 stories at its highest point, Campus Village Building B offers residents a variety of living options: Studios, three-bedroom, four-bedroom or five-bedroom apartments, (single, double and triple occupancy) all equipped with a kitchen and a living room area. Kitchens in CVB apartments do not have garbage disposals. The Resident Activity Center, Spartan Hub and the Village Market are also located in Campus Village Building B. This building is equipped with elevators and air conditioning.



STUDIO

STUDIO APARTMENTS

Studios are single-occupancy and offer a combined living area (no separate bedroom and living room), a bathroom and a kitchenette. The living area includes a bed, dresser, closet, desk and chest, chair, sofa, coffee table, and lamp. The kitchenette comes with a sink, two-burner stovetop, microwave oven, and mini-fridge.

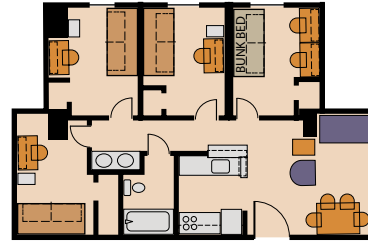


THREE BEDROOM

THREE BEDROOM APARTMENTS

The double-occupancy three-bedroom apartments are for two people per bedroom and offer two bathrooms, a living/dining area and a full kitchen. The kitchen includes a full-sized refrigerator, stovetop, oven, and dishwasher.

*A limited number of three-bedroom apartments include one room with triple occupancy.

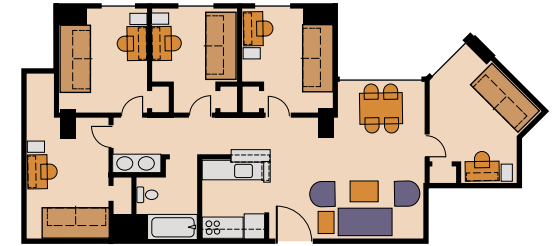


FOUR BEDROOM

FOUR BEDROOM APARTMENTS

The single-occupancy four-bedroom apartments are designed for one person per bedroom and offer one bathroom, a living/dining area and a full kitchen. The kitchen includes a full-sized refrigerator, stovetop oven, and dishwasher.

*Some four-bedroom apartments offer a Junior double option in which one room in the apartment is double occupancy.



FIVE BEDROOM

FIVE BEDROOM APARTMENTS

The single-occupancy five-bedroom apartments have five bedrooms designed for one person per bedroom and offer one bathroom, a living/dining area, and a full kitchen. The kitchen includes a full-sized refrigerator, stovetop, oven, and dishwasher.

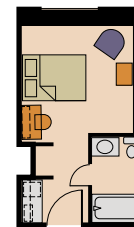
CAMPUS VILLAGE BUILDING A (CVA)

Campus Village Building A (CVA) is an eight-story apartment building designed to accommodate approximately 200 faculty, staff, graduate and upper-division undergraduate students. Graduate students, seniors and juniors may rent a two-bedroom apartment in CVA that two students share, each having their own bedroom. CVA also has two-bedroom apartments that four students share, two students sharing each bedroom and a shared kitchen. The kitchens include a full-sized refrigerator, oven, dishwasher, stackable washer and dryer and a sink with garbage disposal.

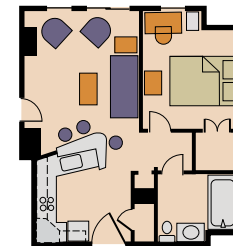
Faculty and staff may choose a furnished one bedroom/one bath or two bedroom/two-bath unit or a single efficiency room. Efficiency rooms are similar to hotel rooms and feature a living area, bathroom and microwave/mini-fridge station. A limited number may be available to graduate students. CVA is equipped with elevators and air conditioning.



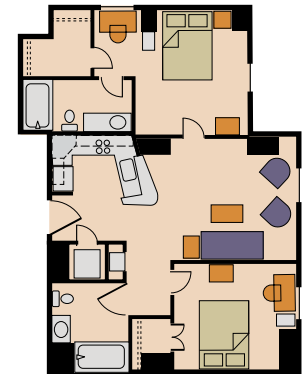
Expanded versions of floor plans are available at sjsu.edu/housing



EFFICIENCY ROOM



ONE BEDROOM

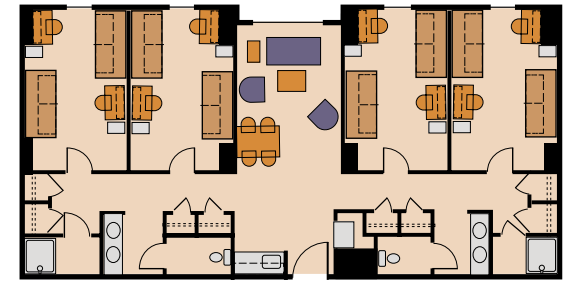


TWO BEDROOM

CAMPUS VILLAGE BUILDING C (CVC) “THE SUITES”

The Suites is a seven-story, suite-style residence hall housing primarily frosh, but available to all students. The Suites emphasize community living, with a programming focus on the transition to college life, building connections to campus, and supportive activities for academic success.

This building is equipped with elevators and air conditioning and can accommodate approximately 570 students. Each suite consists of four bedrooms, two bathrooms, a common living area and a kitchenette, which includes a sink and microwave. All bedrooms are designed and furnished for two students, with a total of eight students sharing the suite. Some suites offer triple occupancy, with three students in one bedroom, with a total of nine students sharing the entire suite. All residents of Campus Village Building C must purchase a full mandatory meal plan.

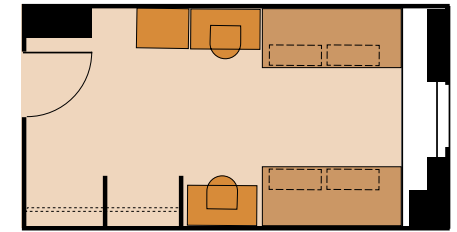
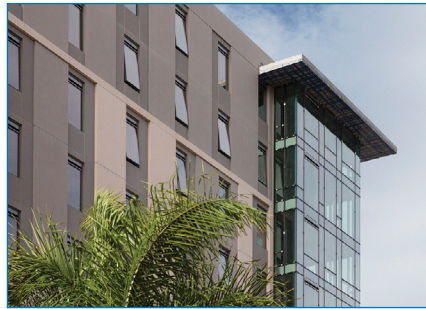


SUITE

CAMPUS VILLAGE BUILDING 2 (CV2)

This 10-story residence hall houses approximately 950 first-year students primarily, but is available to all students. CV2 is equipped with common study rooms, lounges, a multi-purpose room, recreation space and other student support spaces to ensure a smooth transition to college life. Bedrooms are double occupancy rooms designed and furnished for two people.

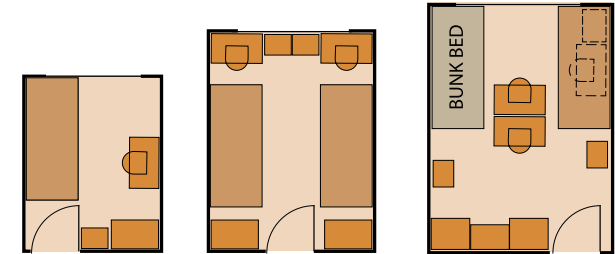
Some rooms offer triple occupancy, with three students sharing one bedroom. Housing rent includes basic utilities, WiFi internet access, and furnished rooms. All residents of Campus Village 2 must purchase a full mandatory meal plan.



DOUBLE OCCUPANCY ROOM

JOE WEST HALL

Joe West Hall is a 12-story residence hall that houses over 650 incoming first-year students primarily, but is available to all students. Joe West Hall provides a number of living options including single, double and triple occupancy rooms. Joe West Hall is equipped with two elevators but does not have air conditioning. Housing rent includes basic utilities, WiFi internet access and furnished rooms. All residents of Joe West Hall must purchase a full mandatory meal plan.



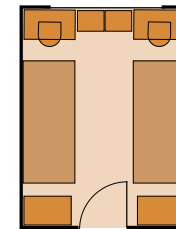
SINGLE

DOUBLE

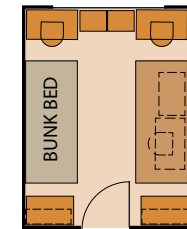
TRIPLE

WASHBURN HALL “THE BRICKS”

The small community experience in Washburn Hall is designed for incoming first-year students in order to ease the transition to college and provide a supportive first-year experience, however, spaces are available to all students. This three-story residence hall offers a small living-learning environment for approximately 250 students. The building is divided into six wings of approximately 48 students each, a design that helps promote community among the residents. Students have the option of double or triple occupancy rooms (two or three students per room). Housing rent includes basic utilities, WiFi internet access and furnished rooms. This building does not have an elevator but offers air conditioning. All residents of Washburn Hall must purchase a full mandatory meal plan.



DOUBLE



TRIPLE



SPARTAN VILLAGE ON THE PASEO (SVP)

The newest addition to SJSU's student housing portfolio brings more Spartans into the heart of San José's vibrant, urban community. Located a short walk to campus along downtown's core pedestrian boulevard, the Paseo de San Antonio. SVP features 700 student beds, state-of-the-art amenities including on-site dining, fitness center, gaming and movie room, expansive study lounges and group study pods, community kitchen, and secure mail and parcel services. Controlled access to the building and 24/7 University Police presence and patrolling around the building and along the Paseo helps ensure residents' safety to and from campus and in the building. SVP has double, triple, and quad occupancy spaces all with private bathrooms. 124 beds are offered to students at reduced rates based on financial need.

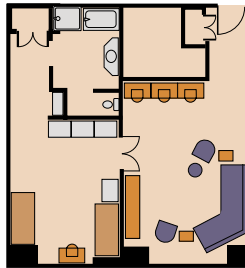
Visit go.sjsu.edu/SVP for more info and virtual tour.



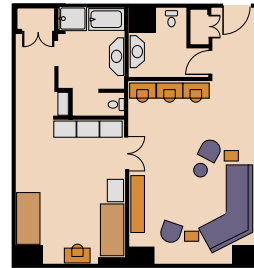
DOUBLE
1 BATHROOM



TRIPLE
1 BATHROOM



QUAD
1 BATHROOM



QUAD
1.5 BATHROOMS

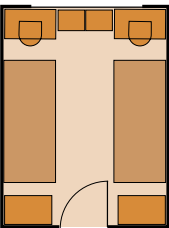


INTERNATIONAL HOUSE

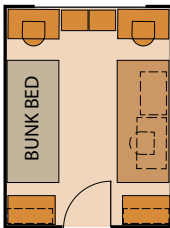
International House (I-House) is home to U.S. and international students. Residents come each semester from approximately 25 countries on 5 continents, study in a wide variety of majors across the university, and range in age from 17 to early 30s. For opportunities to make friends from the U.S. and around the world while living in a safe and supportive environment, apply to live at International House!

Rooms are fully furnished with beds, dressers, chairs, etc. and a walk-in closet. Bedrooms are double occupancy rooms designed and furnished for two people. Some rooms offer triple occupancy, with three students sharing one bedroom. Triple bedrooms are limited.

Applications for I-House should be submitted through University Housing Services (UHS). Rent includes basic utilities, WiFi internet access and furnished rooms. All residents of I-House must purchase a meal plan.



DOUBLE



TRIPLE

HOUSING APPLICATION PROCESS

Housing spaces are limited, and we suggest that you apply for housing as soon as you decide to become a Spartan! It is a good idea to file your intent to enroll prior to applying for housing, but you can apply for housing any time after the application becomes available (usually, early in the spring).

Housing applications are accepted online and all applicants should be prepared to submit the following:

- A completed online University Housing Services application
- A nonrefundable application fee
- An initial payment (which is applied towards housing charges)

To view the most up-to-date fees for housing, visit sjsu.edu/housing

All steps must be completed in order for your housing application to be considered complete.

The housing application deadline is May 1. The sooner you submit your completed license agreement and initial payment, the greater your chance of receiving your building and room type preference. If you plan to live on campus and need financial assistance to do so, we encourage you to apply for financial aid prior to the financial aid priority application deadline. International students do not qualify for financial aid.

To apply for housing, visit sjsu.edu/housing and click on the "Housing Application Portal" button to begin the application process.

ACCOMMODATIONS

University Housing Services is committed to meeting the needs of our residents to the best of our ability. Some housing facilities (including bathrooms) are accessible to residents in wheelchairs, and special-adapted rooms are available for residents who are hearing and/or visually impaired. Other accommodations include:

- Hearing, mobility or vision impairment (where physical accommodation or building adaptation may be required)
- Religious reasons that require special facilities (such as dietary or special room arrangements)
- Needs related to lesbian, gay, bisexual, transgender or queer identities
- Medical conditions; including mental health concerns
- Disabilities that may require a live-in attendant (at the resident's expense)

The SJSU Student Housing Accommodations Policy can be found at sjsu.edu/housing

PARKING FOR UHS RESIDENTS

All residents have the option of requesting a CV parking permit for the underground Campus Village Parking Garage, or an "H" parking permit for the Seventh Street Garage. The Campus Village Parking Garage is conveniently located near our Campus Village Residences while the Seventh Street Garage is in closer proximity to our Residence Halls (Joe West and Washburn Halls). Parking in the Campus Village garage is limited and assigned on a first-come, first-served basis. A limited number of parking spaces are available for residents of the International House.

RESIDENT ACTIVITY CENTER (RAC)

The Resident Activity Center (RAC) located in Campus Village Building B, is an open space for residents to relax with friends and create a balance between academics and social life. Available to all residents, this multipurpose space is complete with pool tables, foosball tables, ping pong tables, and a piano. The RAC also has meeting rooms, which can be used for studying. All equipment and movies can be checked out at the Courtesy Desk.

VILLAGE MARKET

Located on the ground floor of CVB, Village Market is an express store where students and staff can purchase groceries and convenience items using credit or gold (Spartan) points. Customers can find a mix of home essentials, health/beauty products, and basic kitchen items. The store also features a wide variety of beverages, snacks, pizza, ice cream, and breakfast options.

COMPUTER LAB

The University Housing Services Computer Lab is open to all residents. Located in Campus Village Building B on the first floor, the Computer Lab has PC and Mac computers and gaming stations available on a first-come, first-served basis. Residents have access to the Internet and Microsoft Office applications, and printing is also available for a "per page" fee.

SPARTAN HUB AND HOUSING WELCOME CENTER

Located on the first floor of Campus Village Building B, next to the Resident Activity Center, the Spartan Hub and Housing Welcome Center provide workshops, tutoring, advising, study space, and many resources to support the academic and educational aspirations of our residents.

COURTESY DESKS

Courtesy desks are located on the ground floor of each of our residence halls. Courtesy desk services include recreation equipment check out, laundry card purchase, and campus and community information. Courtesy desk hours and services available may vary.

CONFERENCE SERVICES

In the summer, conference groups, camps, and individual campus visitors are all invited to enjoy our summer conference services. Each of our residence halls and apartment communities offer unique, affordable living accommodations that can cater to your group's needs.

For more information on San José State University Conference Services, please visit sjsu.edu/housing/conference-services or email us at uhs-conferenceassistant@sjsu.edu



COSTS

Housing rent includes basic utilities, WiFi internet access, and furniture. To view the most up-to-date costs and amenities for our housing facilities, visit sjsu.edu/housing



MEAL PLANS

Full meal plans are mandatory for all students/residents of CV2, CVC, Joe West and Washburn Halls, Spartan Village on the Paseo and the International House. Meal plans are optional for residents of CVA and CVB. There are a variety of meal plans offered. Students are sure to find one that fits their needs! More information on current meal plan options can be found at dineoncampus.com/sjsu



WHAT TO BRING

It is a good idea to contact your roommate(s) prior to moving into the residence halls. Contacting your roommate can help you avoid duplicating items and bringing more than you need! Here is a short list of items that you should plan to bring:

- Extra-long twin sheets (except faculty/staff apartments)
- Pillows and blankets
- Towels
- Personal toiletries
- Cleaning supplies
- Trash bags
- Alarm clock
- Computer (desktop or laptop)
- Television
- Surge protector and extension cords (UL approved)
- Flashlight

