

Last time...

- What defines the genus *Homo*?
- When does *Homo* first appear? Where?
- How do we identify these fossils as *Homo* rather than *Australopithecus*?
- How are *Homo habilis* different from the other hominids they are contemporaneous with?

Olduwan tools

- What are Olduwan tools?
- How are they made?
- When are they first found and with which species?

Adaptive pattern

- How does the adaptive pattern of early *Homo* differ from that of the *Australopithecines*?
- Why was brain size selected for?
- What else changes in adaptation when brain size increases?

H. habilis v. *H. erectus*

- What makes these two species different?
- When are they found in time? space?

Possible *Homo* species

- *Homo habilis*
 - *Homo rudolfensis*
 - *Homo ergaster*
 - *Homo erectus*
- Sometimes the same
- Sometimes the same

Homo erectus

- Who is *Homo erectus*?
- Where is this species found?
- In what time frame?
- What are its identifying anatomies?

Homo erectus lifeways

- tool technologies that reflect advanced cognitive skills
- Dietary shift to a more heavily meat-based diet than its predecessors

Zhoukoudian
300 kya



Homo floresiensis
95,000-13,000



Homo antecessor / Homo erectus?

Atapuerca
1.2 mya

Atapuerca
800,000



Cranial capacities

	Cranial Capacity
Africa	690-1067
Indonesia	800-1250
China	855-1225

17

Cultural changes

- Greater home range - SIGNIFICANTLY
- More complex stone tools - Acheulean industry



18

Acheulean handaxes



19

Cultural changes

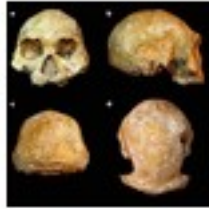
- Control of fire (!)
- Construction of shelters (!)
- Crossing of water



20

Cultural changes

- Care of elderly (over 40!)
- More complex stone tools
- Acheulean industry

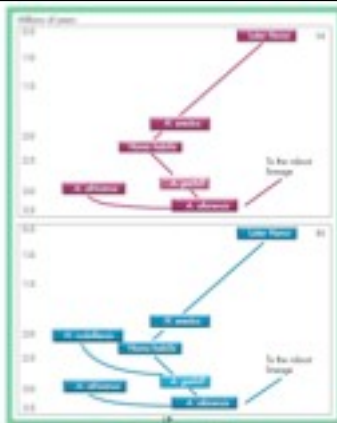


17

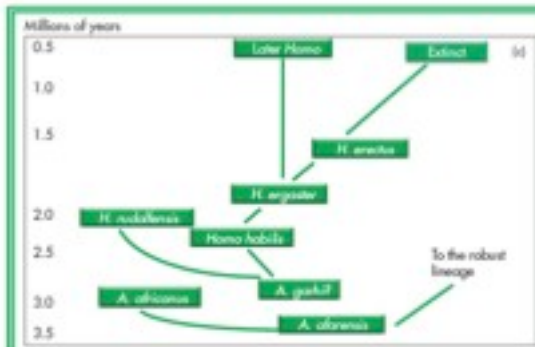
What is special about *Homo erectus*

- Left Africa
- Made more complex stone tools
- Controlled fire
- Constructed shelters
- Modern human proportions and big brains

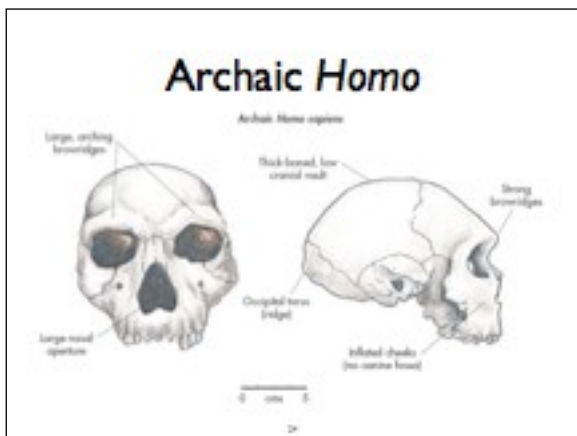
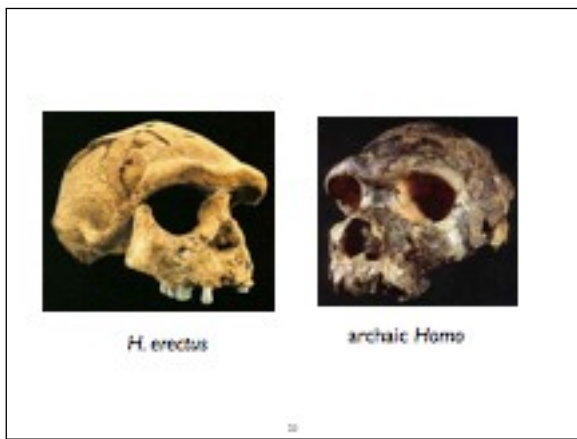
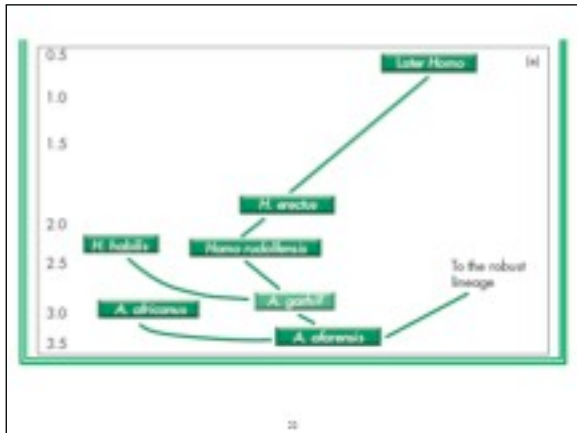
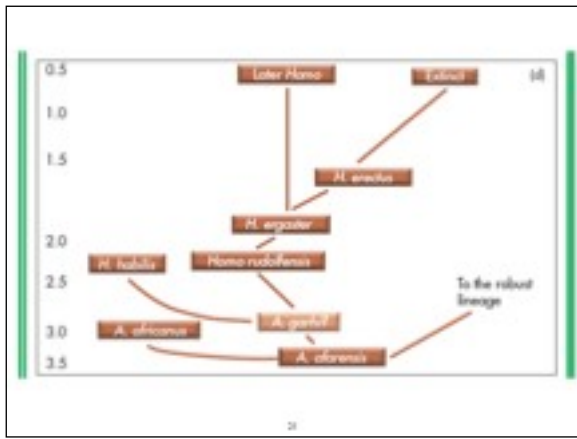
18

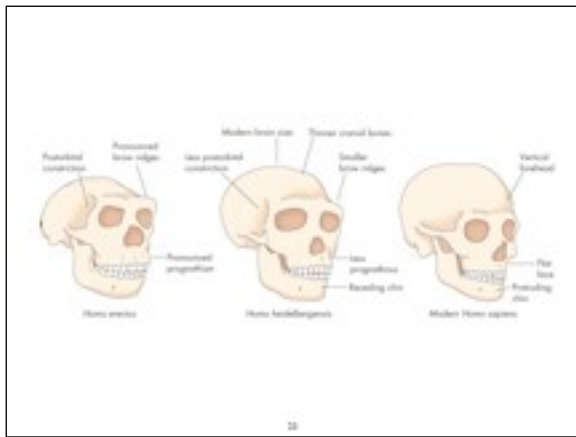


19



20





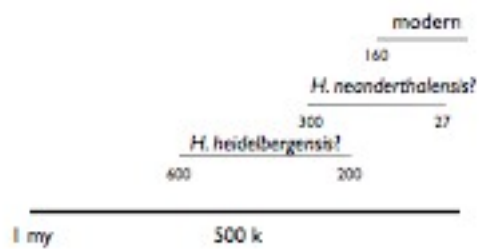
25

Archaic *Homo*

- bigger brains
- higher skull
- less pronounced brow ridges
- chin?
- less prognathism

26

Time frame

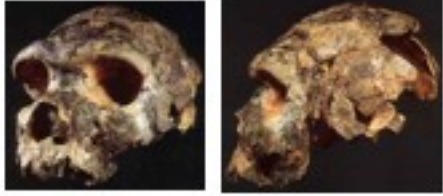


27

"Species" of Archaic *Homo*

- *Homo heidelbergensis*
- *Homo rhodesiensis*
- *Homo neanderthalensis*
- + More

28



Bodo
600,000

27



Kabwe

28



Atapuerca 5



29



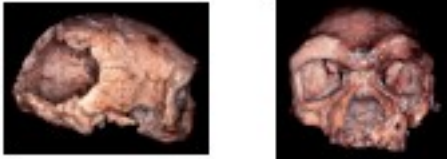
Mauer

30



Petralona

20



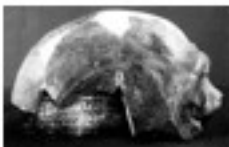
Dali

21



Jinnuishan

22



Maba

23