

## Microevolution and Macroevolution

- How does Microevolution add up to macroevolution?
- What are species?
- How are species created?
- What are anagenesis and cladogenesis?

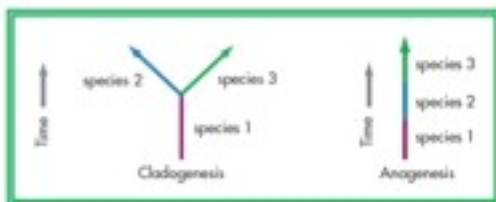
## Species Concepts

- **Biological species concept:** Defines species as interbreeding populations reproductively isolated from other such populations.
- **Evolutionary species concept:** Defines species as evolutionary lineages with their own unique identity.
- **Ecological species concept:** Defines species based on the uniqueness of their ecological niche.
- **Recognition species concept:** Defines species based on unique traits or behaviors that allow members of one species to identify each other for mating.

## Reproductive Isolating Mechanisms

- Premating RIMs
  - Habitat isolation
  - Temporal isolation
  - Behavioral isolation
  - Mechanical incompatibility
- Postmating RIMs
  - Sperm-egg incompatibility
  - Zygote inviability
  - Embryonic or fetal inviability

## Modes of Evolutionary Change





## All characteristics are due to the four forces

- Mutation creates new alleles - new variation
- Genetic drift moves these around by chance
- Gene flow moves these from one population to the next creating clines
- Natural selection increases and decreases them in frequency through adaptation

---

---

---

---

---

---

---

---

## Clines



---

---

---

---

---

---

---

---

## Adaptation?

- An adaptation is an evolved phenotypic trait that increases an organism's reproductive success? that increases their fitness

---

---

---

---

---

---

---

---

## Success measured as **Fitness**

- Success in natural selection is the ability to put one's genes in the next generation
- This can be directly or indirectly
- Those who put more genes into the next generation are more "fit" than others

---

---

---

---

---

---

---

---

# Effects on Fitness

- Own reproduction
  - survivorship
  - health
  - sexual opportunities
    - sexual selection
- Reproduction of relatives
  - kin selection

12

---

---

---

---

---

---

---

---

---

---

# Sexual selection



13

---

---

---

---

---

---

---

---

---

---

# Kin selection

- helping kin helps own genes
- Vervet alarm calls
  - Chimp patrols
    - bees or ants



14

---

---

---

---

---

---

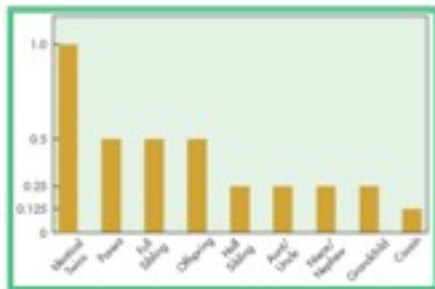
---

---

---

---

# Relatedness



15

---

---

---

---

---

---

---

---

---

---

Human variation today is a result of evolution. It is the result of the four forces of evolution shaping our diversity.

17



18

### Studying Human Variation - a Biocultural approach

Biology is intertwined with human cultural behavior and both shape human diversity

We have evolved through the 4 forces of evolution intertwined with cultural behavior

19

### Adaptation

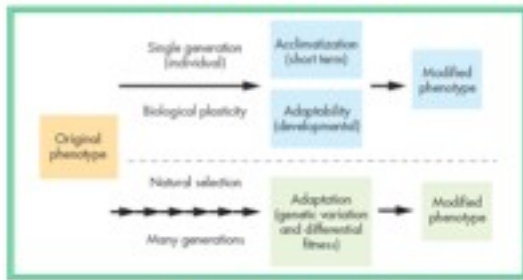
- any change in an organism, either temporary or permanent, biological or cultural, short or long term, involving physiological, structural, behavioral or structural changes, aimed at improving the organisms functional performance in the face of environmental stress

Genetic adaptation

- only such changes that is the result of natural selection

20

## Adaptability and Acclimatization



### Genetic Adaptation

21

## Example - lactose tolerance



lactose tolerance is due to the lactase persistence allele (2q21)

22

## Across the world...

Population	Percentage Lactase Absorbers
<b>Africa</b>	
Bantu (West Africa)	0
Hamar (East Africa)	92
Akan (Ghana)	29
South Africa	17
<b>Asia</b>	
South India	23
Japan	0
Thailand	1
Taiwan Chinese	0
<b>Europe</b>	
Britain	74
Germany	95
Sweden	100
Italy	25-90

23

## Across the world...

<b>North America</b>	
European American	90-94
African American	25-30
Apache	0
Chippewa	30
<b>Pacific</b>	
Fiji	0
New Zealand Maori	26
Australian Aborigines	14
Papua New Guinea	11

Source: Allen & Chew (1994), Malina (2002).

24

Southeast Asians	98%
Asian Americans	90%
Alaskan Eskimo	87%
African Americans Adults	79%
Mexicans from rural	73.8%
North American Jews	68.8%
Greek Cypriots	66%
Cretans	58%
Mexican American Males	55%
Indian Adults	53%
African American Children	45%
Indian Children	25%
Caucasians of N. European and Scandinavian descent	5%

The A haplotype conferring lactose tolerance has an 86% frequency in the northern European population, **but only 36% in southern European populations.**

## WHY?

- high frequency in populations with a long history of dairying and using milk
- tolerance selected for in populations with dairy in diet
- even a modest selective advantage (5 - 10%) could result in high frequencies in just 6000 years

## Example: Sickle cell



## Clinal map of Sickle Cell

